

ULTIMATE EXPLORER

27 Days

\$3050*

includes food, transport,
camp fees and shared tent

* or \$3159 without an ISIC, VIP, YHA or NOMADS card

real adventure
small prices



Explore the best of New Zealand

on this fantastic loop taking in all our Kiwi favourites

POINT 1: Depart Auckland 10am. Leave the city for the golden beaches and warm waters of the Bay of Islands. Visit the [historic Treaty House](#). Enjoy the mangrove walk leading to the thundering Haruru waterfalls. Cycle scenic route. Star-gazing around the camp fire. L/D U

POINT 2: Delicious pancake breakfast. Spend the day in the Bay of Islands clear turquoise waters, just relaxing at the beach or taking out one of the free boogie boards. Enjoy lush Opuia Forest walks. Cycle scenic loop to Russell visiting Kauri Grove on the way. Great optional [trip to Cape Reinga, sail the Bay of Islands, dolphin swimming, Waka paddle and village tour](#) or [dive the Rainbow Warrior](#). In the evening enjoy an optional [Maori Concert and Haka!](#) A second night at same camp. B/L/D U

POINT 3 A day full of adventure. Great cycle routes and walk options, then on to the dunes of Opononi for beach fun and optional [sand boarding](#). Cycle or bus to Waipoua Forest to explore the giant Kauri trees. Travel Hibiscus Coast to camp at the famous [Waiwera hot pools](#) for a relaxing dip. B/L/D U

POINT 4 Return to the "City of Sails". The beautiful Coromandel Peninsula awaits us so bring your swimming gear. A relaxing afternoon at Cathedral Cove beach, if the tide is right, dig pools and bathe in the thermal springs of Hot Water Beach. Optional [sea kayak](#) around dramatic coastlines. Scenic cycle rides around these beautiful coastal landscapes. We camp near the beach tonight. B/L/D U

POINT 5 Drive or cycle to stunning Whiritoa beach for a swim or forest walk amongst the massive Pohutukawa trees. We continue to Rotorua and its thermal wonders. Optional activities include the [Kiwi House, Zorb, Skyline, Luge & Polynesian Pools](#). Cycle ride from camp around the Lake nestled below the dormant but dramatic Mt Tarawera. B/L/D

POINT 6 A relaxed start at our lake side camp. We visit [Wai-O-Tapu](#), mud pools. Drive on to the impressive Huka Falls. Walk or cycle to the great lakeside setting of Taupo. Optional [skydiving, bungy](#). Views of "Mount Doom" as Mts Ngauruhoe, Tongariro & Ruapehu dominate the skyline as we journey along the shores of one of the largest crater lakes in the world. Camp in Turangi. B/L/D U

POINT 7 Chance to try one of the World's greatest one day walks - the "[Tongariro Alpine Crossing](#)". Alternatively, cycle around the beautiful region enjoying the mountains. After some serious exploring we head to our accommodation for recharging and refuelling. B/L/D U

POINT 8 Onto the capital, Wellington, for café culture, good bars, the celebrated [Te Papa Museum](#) and the botanical gardens. If your still keen and feeling flush the capital is a great place for some [shopping](#). We then enjoy a fantastic ferry ride (included) to the stunning South Island. We do not provide accommodation but will help you make a booking. B U

POINT 9 Travel the Pacific coast to Kaikoura, cycle stunning coastal route where close encounters with fur seals and a myriad of sea birds are common. Optional [whale watch](#) or [sea kayak](#) and coastal walk. Stay at a beach camp and an amazing sunrise opportunity. L/D U

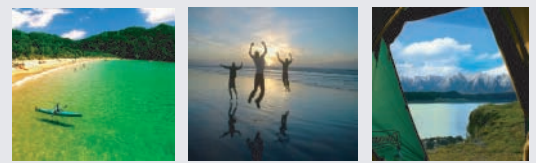
POINT 10 Optional [dolphin swim](#) or [seal swim](#) if you prefer or a chance to cycle by the nature-rich coast. Explore Christchurch, the "Garden City" then head across Canterbury plains to Rangitata Gorge with great walks, rides and accommodation at the foot of the Alps. B/D U

B = BREAKFAST L = LUNCH D = DINNER

BLUE TEXT = OPTIONAL ACTIVITY

U = UPGRADE AVAILABLE

this trip was perfect, you couldnt have done any more. Johanna, Sweden



Departs: anywhere on the loop. Popular choices are Auckland and Christchurch. You can take extended breaks anywhere along the way.

Finishes: wherever you started the loop but contact us if it doesn't quite fit - we are flexible!

Groups: 28 people max

Fitness Level: all levels

Accommodation: camping in commercial and department of conservation camps. Most nights you can upgrade to a cabin for a small fee

Food: Tasty and healthy meals 3 times a day most days (check itinerary). Snacks and hot and cold drinks

Included: all travel, side trips to remote areas & walking tracks, sports equipment on board, food & drinks, camp fees, amazing memories and plenty more

Optional hires:

Cycle hire (for full trip)	\$375
Private cycle handling (for full trip)	\$150
Tent single (inc. mattress)	\$70
Sleeping bag	\$48

+64 3 547 0171 **Flying Kiwi**

Freephone:

0800 693 296 (NZ)

0845 224 3296 (UK)

1800 143 515 (AUS)

www.flyingkiwi.com

POINT 11 Optional [white water rafting](#) on the Rangitata river. Morning cycle or walks in Peel Forest. Travel through Geraldine and Mackenzie Basin with views of the Main Divide. Cycle to the turquoise Lake Tekapo and the historic church. Lake Pukaki (can swim here) camp with views of Mt. Cook. B/L/D U

POINT 12 Morning cycle towards Mt Cook. Hikes around the Mt Cook basin before making our way to the east coast. A short stop in Oamaru before heading to our coastal camp. Chance for a scenic [cycle ride](#) or walks, swim at the beach. Optional [penguin tour](#). B/L/D U

POINT 13 Morning coastal walk or cycle. Visit bizarre Moeraki Boulders. Explore historic and picturesque Dunedin. Have a go at cycling or walking up the World's steepest street! There is also a chance to sample the delights of the [Cadbury \(Chocolate\) factory](#) or [Speights Brewery](#) depending on your tastes. We travel on to the spectacular and natural beauty of the Catlins area for the night. Cycle from camp to Nugget Point lighthouse along a quiet country road. B/D U

POINT 14 Journey through scenic southern pastures, stopping for lunch on the shores of Lake Manapouri. Visit the lake town of Te Anau before heading for Fiordland National Park and our historic camp in the unspoilt Hollyford Valley where cycle rides and walks abound. B/L/D U

POINT 15 One of the World's most scenic routes into Milford Sound! Fantastic stop offs and more photo opportunities than you could handle! Cycle the magnificent descent from Homer Tunnel (3000ft)! Excellent optional [boat cruise](#) to experience the beauty of the fiord. The [Routeburn](#), [Greenstone Track](#) walkers depart here for their awesome trek. Stunning lakeside camp. B/L/D U

POINT 16 Explore Te Anau and plenty of time to walk, [fish](#) or cycle in the area. Optional day [hike on the Kepler track](#) to soak up panoramic views from Mt Luxmore. Also the chance to try some [jet boating](#) or visit the enchanting [glowworm caves](#). Same amazing lakeside camp in Te Anau. B/D U

POINT 17 Journey to Queenstown along the shores of Lake Wakatipu. We stay in a camp overlooking the lake and town, just stumbling distance to get home. Queenstown is the adventure capital and there are [bars](#), [activities](#) and [thrills galore!](#) Track walkers re-join group. A big night out for those who are keen. B/L U

POINT 18 Queenstown with its multitude of adrenalin activities. [Bungy](#), [fly-by-wire](#), [jet boat](#), [rafting](#), [horse trekking](#), [parapenting](#), [skydive](#), [gondola ride](#) - this place has it all, as well as spectacular views. Cycle and walk in alpine areas. A chance to wind down and compare notes and photos from your Queenstown thrills! B/D

POINT 19 A relaxed morning at the camp. Optional [jet boating](#) on the Wilkin River then over the dramatic Haast Pass. Try cycling downhill sections through rainforest, past waterfalls and pools to the wild West Coast. Camp at Okuru, a world heritage area, bird life, lagoon and beach walks. B/L/D

POINT 20 We are now on one of the Lonely Planets top 10 drives in the World. We head to Fox Glacier for optional [guided walk](#) or [heli hike](#) on the spectacular glaciers. Cycle to Okarito beach camp. White Heron Sanctuary, spectacular walks and breathtaking views of the Southern Alps. B/L/D

POINT 21 Morning at Okarito. Great cycle route along the coast. Visit Bushmans Museum, Check out famous Greenstone factories of Hokitika. Stunning coastal walk and cycle. Excellent beach camp at Punakaiki, home of the famous Pancake Rocks and Paparoa National Park. Keep your eyes peeled for kiwi birds!! Many great walks and rides to choose from. B/D U

POINT 22 Traditional Flying Kiwi pancake breakfast. Explore the outstanding sub-tropical flora and admire limestone formations in the Canyon. Cycle rides, [glow worm caves](#), beach. Optional [horse riding](#), and [kayaking](#). Stay at same great camp. B/L/D U

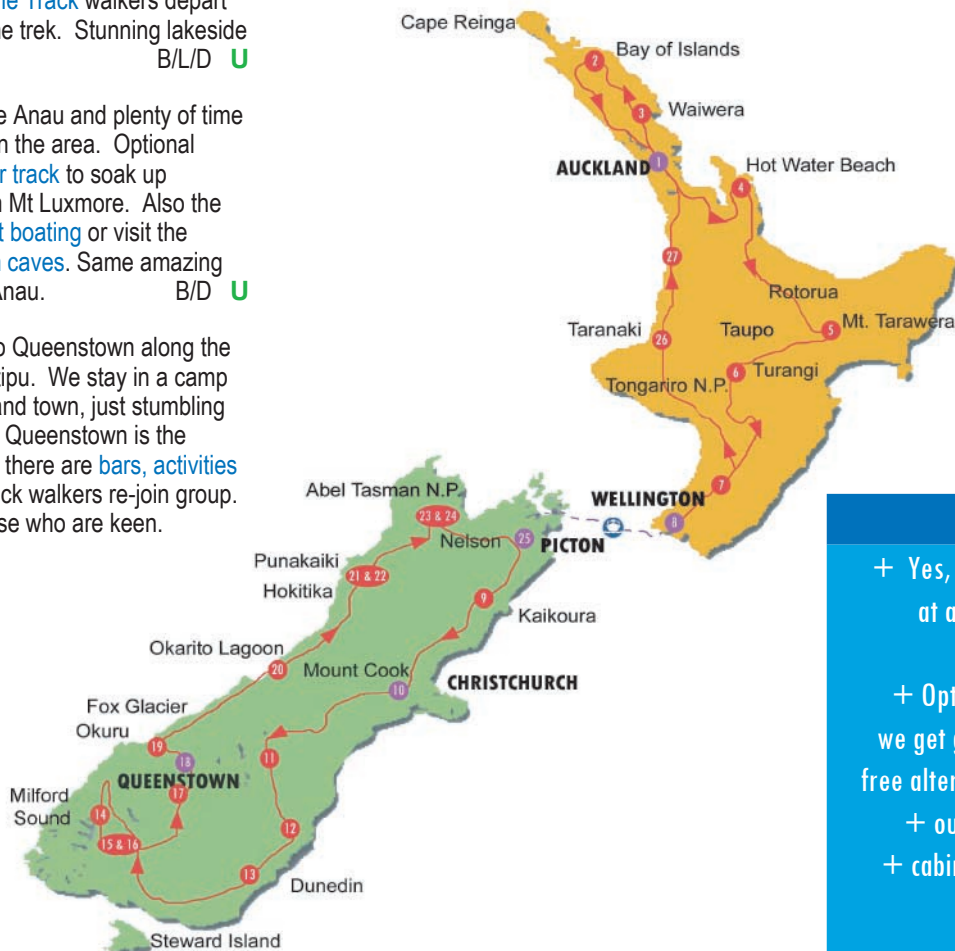
POINT 23 Travel through the Buller Gorge for some cycling and beautiful scenery to one of NZ's most stunning spots - the Abel Tasman region. Cycle backroad route. Optional [skydive](#) or fly in an [acrobatic plane](#). We stay 2 nights at Marahau, with the Abel Tasman National Park on our doorstep. B/D U

POINT 24 Free day for exploring the area. Walk, cycle, optional awesome [sailing](#) the scenic coast, [sea kayak](#), [boat and walk the golden beaches](#). Swim in crystal clear waters. Night out at a cool cafe. B/L U

POINT 25 Time to soak up Nelson's cafe culture, arts and unique architecture. Cycle and hike options around the golden coasts. Travel through the Marlborough wine region. Enjoy a fantastic evening ferry ride into the capital. If going North, we don't provide accommodation but will help you make a booking. B

POINT 26 More time in morning to explore the fantastic capital and [museums](#). Then head off towards beautiful Taranaki. Camp around the "Naki" on the doorstep of the surf highway. No Meals. U

POINT 27 Leave early and head to Waitomo Caves - a limestone wonderland created by erosion over millions of years. Optional [blackwater rafting](#) or some excellent walks. Arrive in buzzing Auckland by 6pm for a taste of big city life "kiwi style". B/L



FAQS

- + Yes, you can start at any point, get off at any point for extended breaks and join the next bus passing through
- + Optional activities aren't included but we get good discounts and theres always free alternatives with sports gear on board
- + our average group size is around 23
- + cabin upgrades available most nights (approx \$12 per night)

CONTACT US IF YOU HAVE ANY QUESTIONS